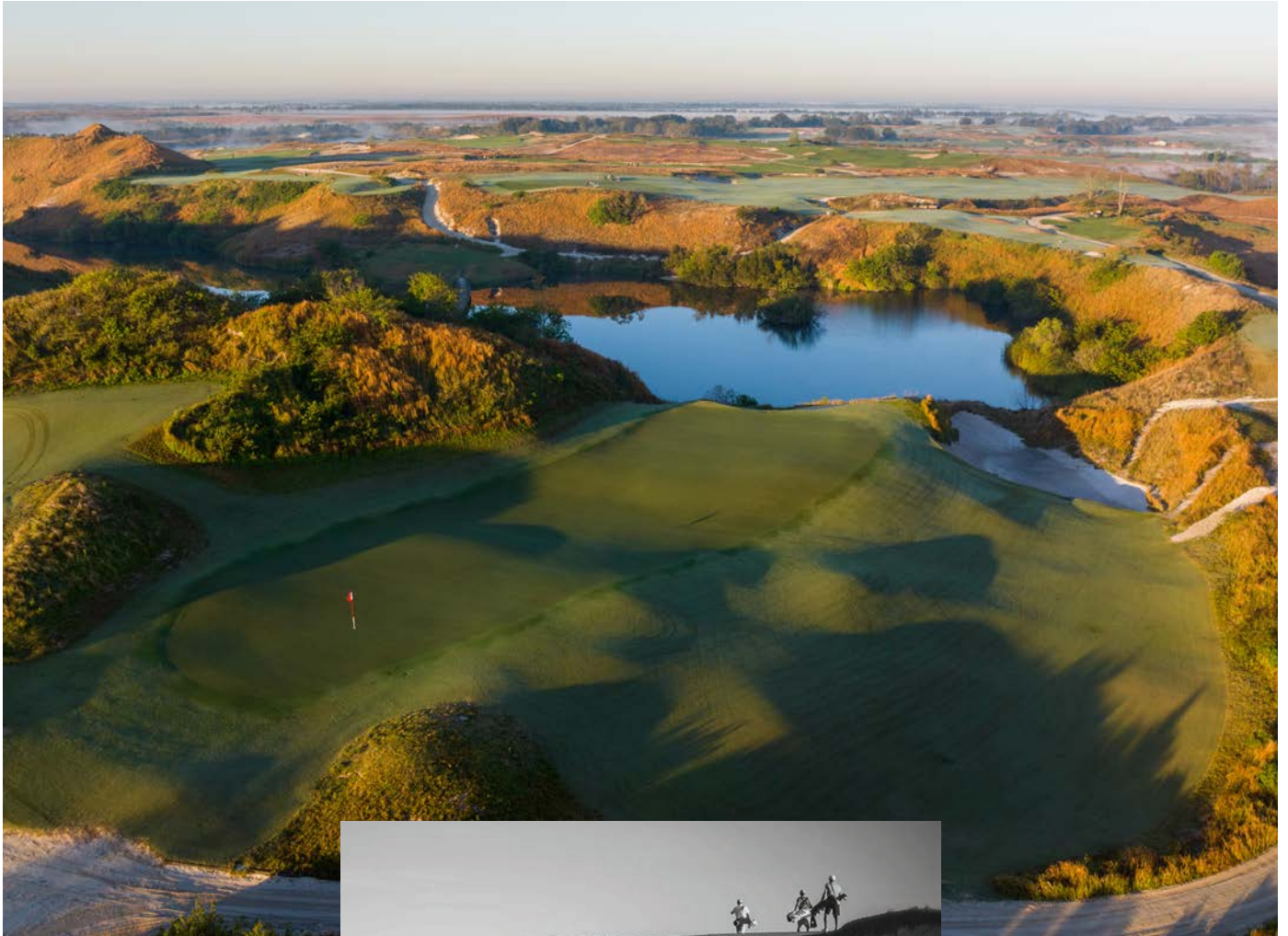




streamsong®







GOLF AT ITS PUREST

— FORGET ANY COURSE YOU'VE EVER PLAYED —

Streamsong® offers a golf experience like no other, in a setting like you've never seen. With a seamless integration of indigenous and awe-inspiring terrain, Streamsong's three spectacular courses inhabit a landscape that belies their Central Florida locale. Instead of flatland, you'll find towering sand dunes and unexpected contours without a distraction or intrusion in sight. Just you, your friends, and the game you love. The way golf was meant to be.

Golfweek's Best Courses You Can Play

Streamsong® Red #18, Streamsong® Black #22, Streamsong® Blue #24

Golf Magazine's Top 100 Courses You Can Play

Streamsong® Red #19, Streamsong® Blue #27, Streamsong® Black #39

Golf Digest's – America's 100 Greatest Public Courses

Streamsong® Red #20, Streamsong® Blue #26, Streamsong® Black #34

SPEECHLESS

— WORDS CAN'T EXPRESS WHAT IT'S LIKE HERE —

The undulating terrain at Streamsong captivates your attention, but it's the golf that will take your breath away. 73 holes have been sculpted out of this tranquil setting of steep-banked lakes and towering dunes amidst thousands of acres of native vegetation and windswept fields of prairie grasses.



Streamsong is the only destination in the world where players can experience four distinct golf courses designed by these five legendary architects – Bill Coore and Ben Crenshaw, Tom Doak and Gil Hanse and Jim Wagner. Streamsong Red, Streamsong Blue and Streamsong Black – four of the most highly acclaimed and widely pursued golf courses in the game today. Revered as a bucket-list destination, Streamsong Golf Resort rivals the greatest golf venues in the world.

Streamsong Blue No. 8



Streamsong Red No. 14



Streamsong Red No. 7





STREAMSONG® BLUE

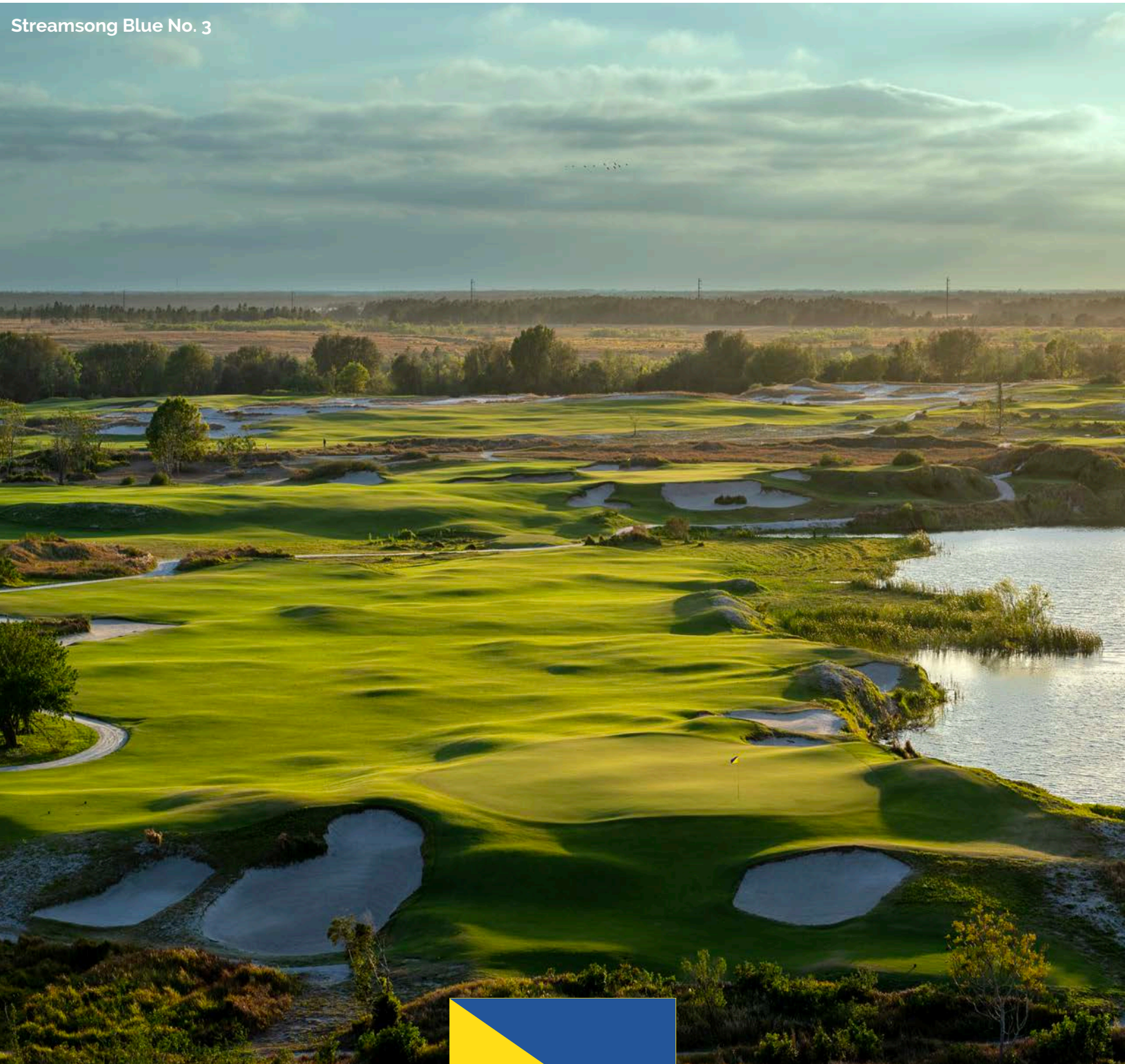
"This is such a good piece of land for golf. The variety of contours created by the mining process is unique for a project in Florida—or anywhere in the Southeast."

– Tom Doak

With its multiple elevation changes, fairways navigating wild grasses and deep-water ponds and huge bunkers that roll off of towering sand dunes, Streamsong Blue seems designed by discovery rather than by intention. Created by Renaissance Golf Design's renowned architect Tom Doak—who already has seven designs ranked among the top 100 in the world. Streamsong Blue features spectacular terrain, with rises and falls in elevation, and contours that undulate offering some of the most stimulating holes in golf.



Streamsong Blue No. 3



Streamsong Red No. 1 & 6





STREAMSONG® RED

"...some of the most unusual, interesting and dramatic landforms we have ever encountered...the landscape is different than anything we've ever worked with."

– Bill Coore

Simply put, Streamsong Red is like nothing you've ever played. Designed by the legendary team of Bill Coore and Ben Crenshaw—architects of seven designs in the Top 100 in the United States—Streamsong Red is an 18-hole masterpiece. With its Mach 1 greens and winding fairways that meander through decades-old sand dunes, lakes, and natural bunkers, Streamsong "is naturally conducive to uncovering great golf holes," says Crenshaw, who himself is a two-time Masters Champion.

With its striking landforms, expansive lakes, rolling terrain and stretches of open savannah, Streamsong Red brings drama and strategy into play on each spectacular hole.





Streamsong Black No. 2

STREAMSONG® BLACK

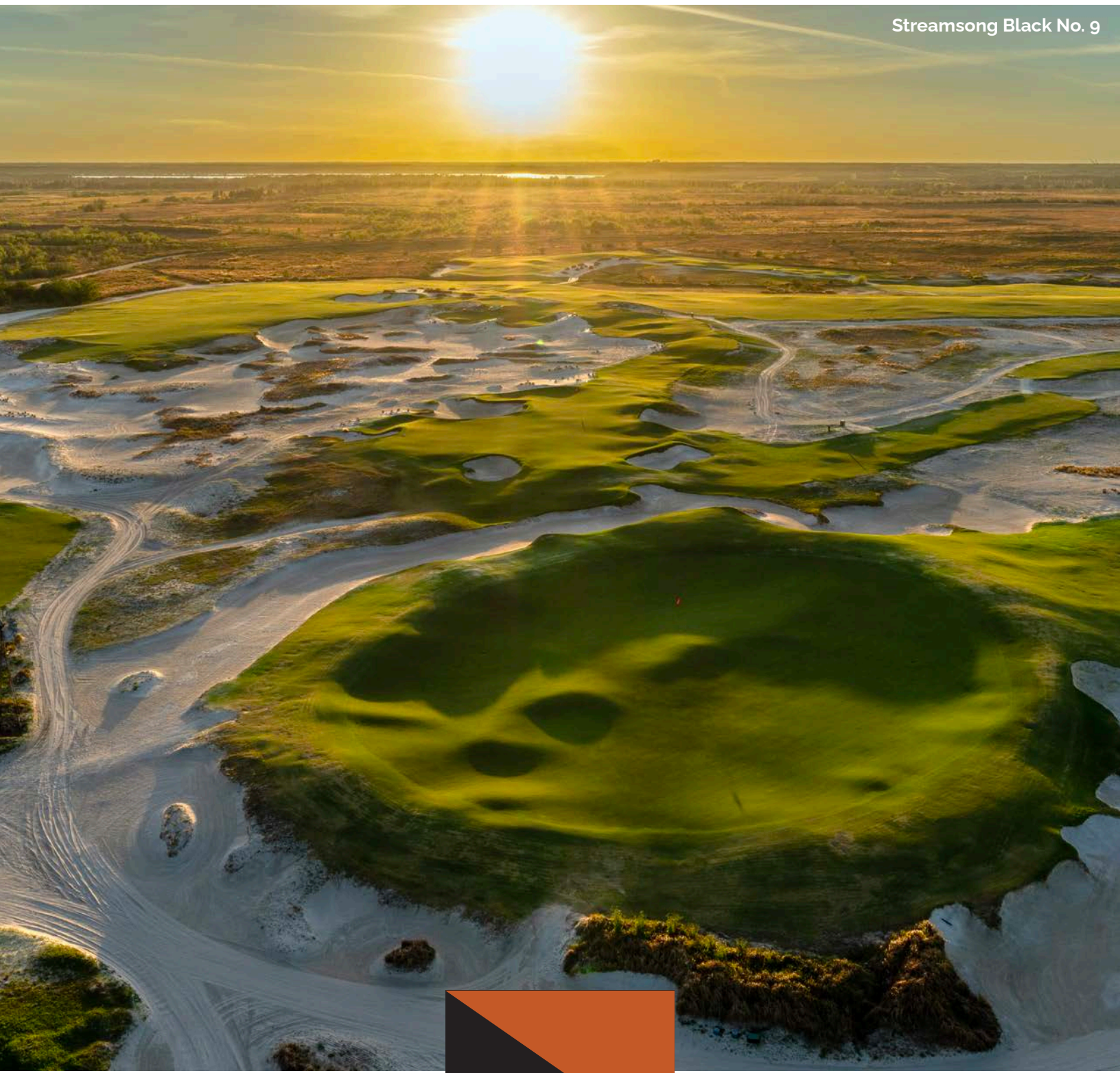
"The scale and shape of this landscape and the creative design features we were able to incorporate into this layout make Streamsong Black a fun and strategic course to play".

- Gil Hanse

Streamsong Black designed by acclaimed architects Gil Hanse and Jim Wagner is a dazzling Par-73 championship layout offering breathtaking views of the vast landscape, which includes flowing elevation, rolls, tumbles and sand ridges akin to the Sand Belt region of Australia. This exciting addition to Streamsong is big, bold and features The Gauntlet, a 1.2 acre putting course and The Roundabout, a free-flowing short course and practice area which includes three double green complexes. Streamsong Black is the perfect complement to Streamsong Red and Streamsong Blue.



Streamsong Black No. 17



GOLF ARCHITECTS



Designed by highly acclaimed architects Gil Hanse, and Jim Wagner, Streamsong Black is equally respected as its award-winning predecessors Red and Blue. Hanse & Wagner, designers of the 2016 Olympic Course in Rio de Janeiro, are two of the most talented and entrusted architects in the game, restoring many of America's most prominent private clubs.



Tom Doak, known for his design philosophy of routing around the natural features of the land, created Streamsong Blue to be both strategic and playable. Doak's philosophy behind his minimalist approach to some of the greatest courses in the world was forged at historic St. Andrews in Scotland and continues to awe golfers around the world.



Designed by the legendary team of Bill Coore and Ben Crenshaw - architects of seven designs in the Top 100 in the United States - Streamsong Red is an 18-hole masterpiece. Coore and two-time Masters champion Crenshaw have blended their personal experience and admiration for classic courses to create a style uniquely their own.



The newest addition to the world class golf offerings at Streamsong comes, once again, from the dynamic duo of Bill Coore and Ben Crenshaw. The 2023 opening of, the short course of roughly 3,000 yards provides guests with 19 incredibly designed holes ranging from 90 to 240+ yards. Along with The Chain is The Bucket, a sprawling two acre putting course delivering another option for post round fun, complete with a 22,000 pound dragline bucket as the centerpiece in a nod to the mining history of the Streamsong site. Built just steps from the front doors of the Lodge, these two new options are sure to be guest favorites.



OUR CLUBHOUSES

Streamsong offers two outstanding clubhouses, each with scenic special event venues and Pro Shops stocked with the latest in logo golf apparel, golf equipment and accessories. The Clubhouse at Streamsong Red and Blue offers 12 exclusively unique guest rooms, a common private gathering room, The Player's Den, Pub 59 and Canyon Lake Steakhouse with stunning views of the resort's natural surroundings. Clubhouse buyouts are available and include exclusive access to Player's Den hospitality room and all 12 guest rooms. The Streamsong Black Clubhouse is home to Bone Valley Tavern, where guests can unwind by the outdoor fire pit or dine alongside breathtaking course views and The Gauntlet, an impressive 1.2 acre putting course.





Streamsong® Blue

	YARDS	PAR
No. 1	338	4
No. 2	554	5
No. 3	418	4
No. 4	442	4
No. 5	157	3
No. 6	345	4
No. 7	203	3
No. 8	454	4
No. 9	575	5
OUT	3486	36
No. 10	187	3
No. 11	487	4
No. 12	408	4
No. 13	312	4
No. 14	545	5
No. 15	446	4
No. 16	237	3
No. 17	590	5
No. 18	478	4
IN	3690	36
TOTAL	7176	72

Streamsong® Red

	YARDS	PAR
No. 1	474	4
No. 2	555	5
No. 3	404	4
No. 4	330	4
No. 5	453	4
No. 6	185	3
No. 7	527	5
No. 8	147	3
No. 9	312	4
OUT	3387	36
No. 10	486	4
No. 11	434	4
No. 12	500	4
No. 13	535	5
No. 14	181	3
No. 15	474	4
No. 16	208	3
No. 17	403	4
No. 18	540	5
IN	3761	36
TOTAL	7148	72

Streamsong® Black

	YARDS	PAR
No. 1	573	5
No. 2	361	4
No. 3	480	4
No. 4	601	5
No. 5	211	3
No. 6	342	4
No. 7	178	3
No. 8	427	4
No. 9	450	4
OUT	3623	36
No. 10	548	5
No. 11	463	4
No. 12	571	5
No. 13R	441	4
No. 13L	430	4
No. 14	298	4
No. 15	133	3
No. 16	463	4
No. 17	205	3
No. 18	586	5
IN	3708	37
TOTAL	7331	73

CADDIE SERVICES

We believe the best way to experience the game of golf at Streamsong is to walk with a caddie. Caddies come to Streamsong Resort with a range of skills honed at some of the country's most exclusive private clubs and resorts.

STREAMSONG[®] RESORT

— A FEAST FOR THE SENSES, A HAVEN FOR THE SOUL —

Whether you're planning a buddy golf group, an executive retreat or a corporate meeting and incentive program, Streamsong offers a diverse blend of resort amenities, golf and recreational facilities. Professional event coordinators and PGA Professionals ensure that every detail of your experience are handled effortlessly.



SOTTOTERRA[™]

Nestled into the Lodge's lower level is the chic and modern dining room Sottoterra. Expert presentations of classic Italian cuisine use the best that the earth and oceans have to offer.



FIN & FEATHER[™]

The lush atmosphere of P205 provides an elegant backdrop for casual dining all day long. Classic American dishes are served with clever sides and starters.



ROOFTOP 360[™]

Nothing can top a cocktail with a view atop the Lodge's 6th floor at Fragmentary Blue. Enjoy the sunset overlooking the lake, or linger under the skylight at the bar with a shared plate of small bites and a selection of hand-crafted cocktails.



THE RESORT

The lakeside Lodge at Streamsong was designed in harmony with its natural surroundings and the extraordinary courses that envelop it. Ideal for small, medium, and even large groups, the Lodge features 216 guest rooms and suites, 25,000 square feet of flexible indoor meeting space, 60,000 square feet of outdoor special event venues along with fine and casual dining.

In addition to our nationally ranked golf courses, on-site recreational activities and amenities include sporting clays, guided bass fishing, tennis, archery, a full-service AcquaPietra Spa, fitness center, walking trail and infinity lakeside pool.



PUB 59™ AT THE RED/BLUE CLUBHOUSE

Pub 59 presents the perfect atmosphere to relax and unwind after a rewarding day on the course with a great selection of microbrew and craft beers on tap which pairs perfectly with the pub fare inspired menu.



CANYON LAKE STEAKHOUSE™ AT THE RED/BLUE CLUBHOUSE

Streamsong's newest epicurean experience offers an elevated steakhouse menu featuring DeBragga USDA Prime and dry aged beef served in an upscale dining atmosphere.



BONE VALLEY TAVERN™ AT STREAMSONG® BLACK

Boasting 360 degree views, fresh seafood, small plate and local craft cocktails, Bone Valley Tavern is the perfect place to gather, graze and share experiences with friends.

MEETINGS & EVENTS

— FACILITIES OVERVIEW —

Streamsong is a meeting and incentive destination intentionally designed in harmony with its natural surroundings and deeply committed to the highest aspirations of today's business elite. Here you will experience an environment uniquely designed to spark innovation, fuel motivation and engage communication in ways you've never imagined.



11 Meeting Rooms
 2,285 sq. meters/ 25,000 sq. ft. of Total Meeting Space
 Largest Room Capacity: 500 Theater Style
 Largest Room Measurements: 80.50L x 97W x 19H

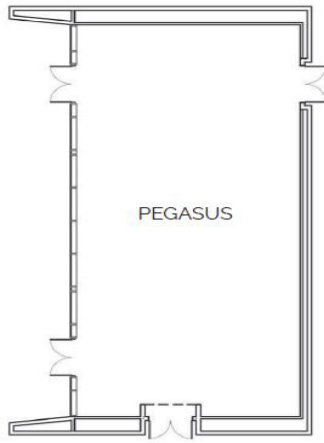
LODGE	SF	SM	L	W	H	FD8	RECEP	CR	THE	RD8+	US	HS	BR	CONF
Pegasus	2,012	187	31.25	64.50	15.00	112	126	92	168	80	40	48	28	32
Pegasus Terrace	1,270													
Architects Hall	7,579	707	80.00	97.00	19.00	360	476	346	634	240	N/A	N/A	N/A	N/A
Architects Hall A	3,807	353	80.00	48.00	19.00	192	238	172	316	128	76	90	N/A	N/A
Architects Hall B	1,929	178	40.00	48.00	19.00	104	120	86	160	128	38	46	27	30
Architects Hall C	1,929	178	40.00	48.00	19.00	104	120	86	160	128	38	46	27	30
Architects Hall Foyer	4,440		186.00	42.00	45.00									
Doak Terrace	3,550													
Hanse + Wagner	884	82	18.00	47.00	9.00	48	55	40	72	N/A	18	20	12	14
Hanse	442	41	18.00	47.00	9.00	24	27	20	36	N/A	N/A	N/A	N/A	N/A
Wagner	442	41	18.00	47.00	9.00	24	27	20	36	N/A	N/A	N/A	N/A	N/A
Coore + Crenshaw	1,350	125	27.00	48.00	10.00	72	84	60	112	40	27	32	19	22
Coore	675	62	27.00	24.00	10.00	36	42	30	56	N/A	13	16	N/A	N/A
Crenshaw	675	69	27.00	24.00	10.00	36	42	30	56	N/A	13	16	N/A	N/A
Toscana	753	78	36.00	20.00	10.00	36	42	34	62	N/A	15	18	10	12
Bordeaux	844		36.00	23.00	10.00	N/A	N/A	N/A	N/A	N/A	N/A	N/A	N/A	20
Covered Breezeway	6,600		110.00	60.00	12.00	32	47	34	62	N/A	15	18	10	12
Breezeway Event Lawn	8,100		90.00	90.00										
Bone Valley Tavern (Private Dining) *Please contact our team for more information.	768		32.00	24.00						N/A				



Lodge Pegasus

Pegasus:
Height: 16'
Length: 31'
Width: 64'
Square Footage: 2,012

Pegasus Terrace:
Square Footage: 1,270

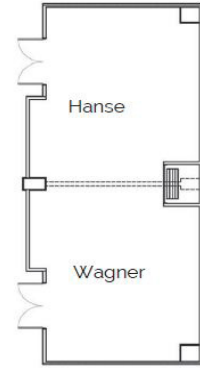


Lodge Hanse Wagner

Hanse:
Height: Varies 9' to 10'
Length: 18'
Width: 23'
Square Footage: 442

Wagner:
Height: Varies 9' to 10'
Length: 18'
Width: 23'
Square Footage: 442

Combination:
Height: Varies 9' to 10'
Length: 18'
Width: 47'
Square Footage: 884

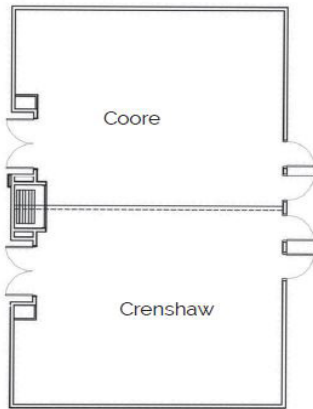


Lodge Coore Crenshaw

Coore:
Height: Varies 9' to 10'
Length: 24'
Width: 27'
Square Footage: 675

Crenshaw:
Height: Varies 9' to 10'
Length: 24'
Width: 27'
Square Footage: 675

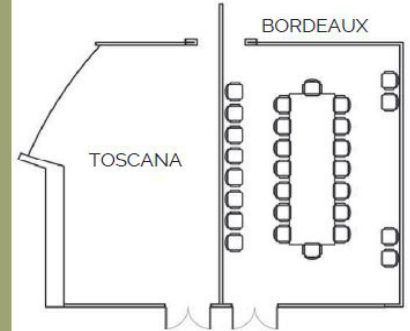
Combination:
Height: Varies 9' to 10'
Length: 48'
Width: 27'
Square Footage: 1,350



Lodge Bordeaux Toscana

Bordeaux:
Height: Varies 9' to 10'
Length: 36'
Width: 23'
Square Footage: 844

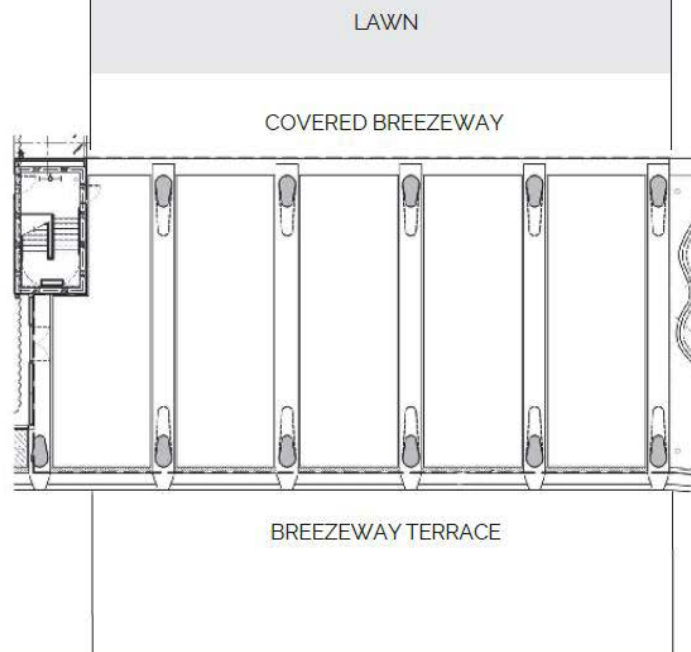
Toscana:
Height: Varies 9' to 10'
Length: 36'
Width: 20'
Square Footage: 753



Lodge Breezeway

Breezeway:
Height: Varies 10' to 12'
Length: 110'
Width: 60'
Square Footage: 6,600

Breezeway Lawn:
Length: 220'
Width: 200'
Square Footage: 40,000



Lodge Architects Hall

Architects Hall Total:

Height: Varies 19' to 21'
Length: 80'
Width: 97'
Square Footage: 7,579

A:
Height: Varies 19' to 21'
Length: 80'
Width: 48'
Square Footage: 3,807

B:
Height: Varies 19' to 21'
Length: 39'
Width: 48'
Square Footage: 1,929

C:
Height: Varies 19' to 21'
Length: 40'
Width: 48'
Square Footage: 1,929

Doak Terrace:
Square Footage: 3,550

Lodge Architects Pre-function

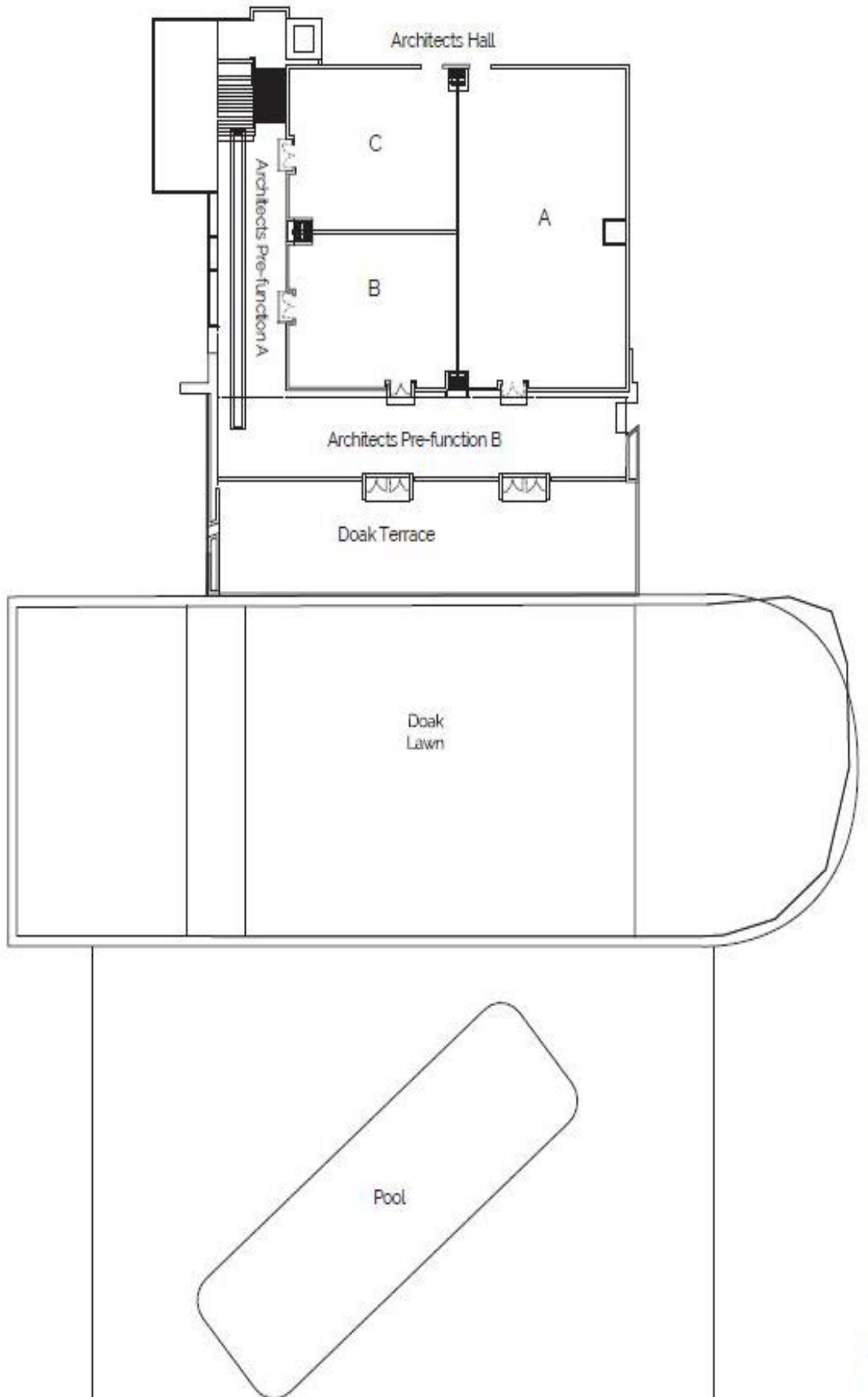
Pre-function A:
Height: Varies 20' to 22'
Length: 69'
Width: 20'
Square Footage: 1,865

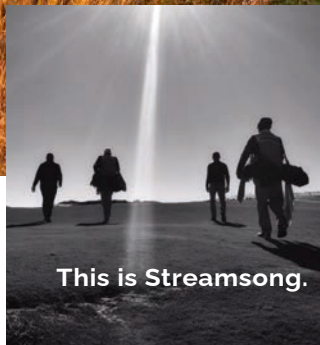
Pre-function B:
Height: Varies 20' to 23'
Length: 117'
Width: 22'
Square Footage: 2,575

Combination:
Square Footage: 4,440

Lodge Doak Terrace

Square Footage: 3,550





This is Streamsong. Golf at its purest.